



# JES-370 DENOX Gas Sampling Probe



## Gas Sampling Probes

Heated Sample Lines

Sample Gas Coolers

Condensate Treatment

Accessories

Gas Conditioning Systems

Sample Gas Converters

### APPLICATION

- Extractive gas analysis
- Continuous gas sampling e.g. downstream DENOx plants (SCR)
- Removal of dust and other interfering solids e.g. ammonia salts from the sample gas flow
- Outdoor and indoor installation

### BENEFITS

- Minimum wash out effects
- Easy start-up
- Fast operational readiness
- Very long service life
- Convenient element replacement
- Low maintenance
- Very efficient back purging

### FEATURES

- Homogeneous heating of the sampling probe up to 315°C without cold spots
- No clogging of probe or connected line
- Self cleaning effect due to dissolving of ammonia salts in accumulated condensate
- Weather protection housing for outdoor installation
- ABS filter with freeze protection or heater (optionally)
- Large active filter surface (170 cm<sup>2</sup>)
- Electronic temperature controller
- Filtration from outside to inside
- Temperature status contact
- Wide range of accessories
- Integrated purge controller (optionally)

## TECHNICAL DATA

### Operational data

Filter element Option	ceramic, pore size 2 µm 40/20x135 mm Surface coated 0,2 µm
Operating pressure	max. 200 kPa abs.
Sample gas wetted parts	SS316, ceramic; Perlast®
Temperature adjustment range	5°C to 315°C
Factory setting	280°C
Ready for operation	approx. 45 min
Permissible ambient temperature	5°C to +55°C
with freeze protection	-5°C to +55°C
with heated ABS filter	-10 °C to +55°C
Operating temperature heated air accumulator	+100°C +/- 5°C
Control pressure for pneumatic actuator	5 to 10 barg
Flow rate (back purging)	approx. 90 Nm <sup>3</sup> /h @ 4 bar, 160 Nm <sup>3</sup> /h @ 7 bar
Air for back purge	instrument air according to ISO 8573-1 Class 1.2.1
Protection class	Electronic: IP 65, Probe: IP 43

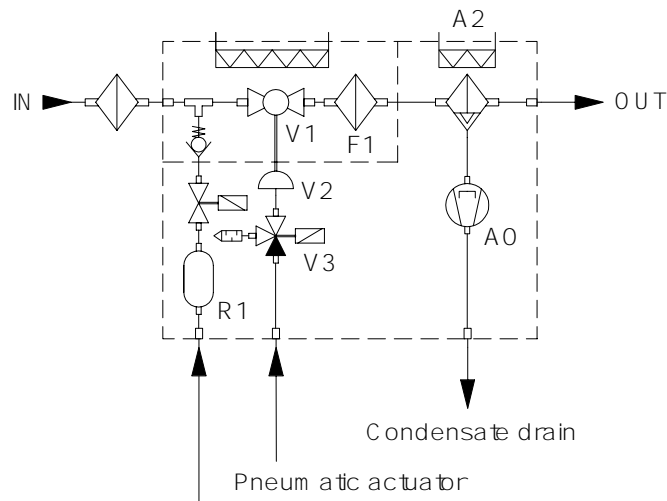
### Construction

Mounting flange Option	DN 65, PN 6, form A according to EN 1092-1; SS316Ti 2"ANSI; 150lbs., hole pattern according to ASME B16.5
Mounting angle	range 5° to 10° with respect to the horizontal, sloping down
Mounting position	torsion angle max. 10°
Dimension over all (WxHxD)	696 x 613 x 443 mm
Weight	approx. 30 kg
Housing material	SS304, brush-finished
Sample gas inlet	G 3/4" female thread
Sample gas outlet	PVDF hose fitting DN 4/6 mm
Calibration port (optional)	6 mm bulkhead union, SS316
Connection condensate drain (option)	PVDF hose fitting DN 4/6 mm
Back purge port	12 mm bulkhead union, SS316
Back purge gas wetted materials	SS316, brass, EPDM
Temperature sensor	Pt100
Heater element	800 W
Power consumption	approx. 810 VA
Freeze protection / ABS heater (option)	125 / 250 W
Heating air accumulator (option)	200 W
Power supply	230 VAC/50 Hz or 115 VAC/60 Hz
Electrical connection	spring type terminal , clamping range 0,08 to 2,5 mm <sup>2</sup>
Switching alarm relay of back purge controller	Typ. 230 VAC/2 A/min. 5 VADC/5 mA
Approval / Sign	CE

Scope of delivery: sampling probe, mounting material, flange gasket, gasket for sampling pipe, operating manual  
\*1...with non-return valve

# FLOW CHART

This flow chart includes all possible options



# DIMENSIONS

Dimensions in mm

